











Step 2


Ordering product components

		Standard				Optional			
						G	E	G	
①									
	Page	DK 4.45/ 4.49A	DK 4.46	DK 4.47/ 4.49B	DK 4.48	DK 4.49D	DK 4.49C	DK 4.49D	Continue to step 3
②		DT 510 thumbturn cylinder	DT 510 double cylinder	DT 510 thumbturn cylinder, with dummy on one side	DT 510 single cylinder with thumbturn	Tool set	Optional versions	Supplementary products Service and maintenance	Programming and user keys
① For wooden, glass, narrow frame or metal external doors, in compliance with VdS 2156BZ	F	✓	✓	✓	✓	✓	✓	✓	DK 7.2
	EN 179	✓	-	✓	-	✓	✓	✓	
	EN 1125	✓	-	✓	-	✓	✓	✓	
② For wooden, glass, narrow frame or metal interior doors, in compliance with VdS 2156BZ	F	✓	✓	✓	✓	✓	✓	✓	DK 7.2
	EN 179	✓	-	✓	-	✓	✓	✓	
	EN 1125	✓	-	✓	-	✓	✓	✓	

Mortise lock, glass door fittings, striking plate and lever handle aperture parts are optional and must be selected in accordance with the door requirements (fire resistance and smoke control, EN 179, EN 1125).

Information about processing and installation can be found in our online shop "Easy link"

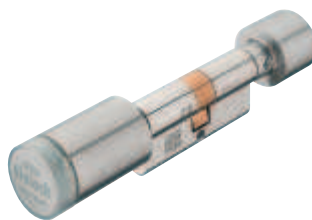
Sample order

	Glass door in residential areas, glass thickness 10 mm, battery-operated door terminal		
		Battery-operated door terminal	
	917.57.100	DT 510 D thumbturn cylinder, dim. A 27.5 mm, dim. B 27.5 mm	DK 4.45
	G	Service and maintenance	
	917.93.065	Tool set	DK 4.49D
E	Supplementary products	DK 4.49D	
Continue to step 3	Programming and user keys	DK 7.2	

DK 2013, HDE, 01/13; Dimensional data not binding. We reserve the right to alter specifications without notice.

LEGIC® Integra Project

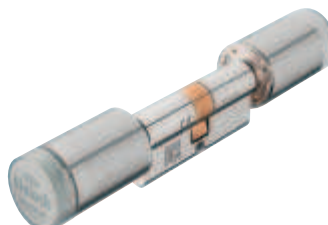
DT 510 D, DT 510 D-DZ, DT 510 B and DT 510 H Electronic thumbturn or double cylinder



DT 510 D thumbturn cylinder



DT 510 B thumbturn cylinder, dummy on one side



DT 510 D-DZ double cylinder



DT 510 H single cylinder with thumbturn

Electronic thumbturn or double cylinder with PC shape for inserting in mortice locks that comply with DIN 18251.

For door thickness from 40 to 110 mm.

Functionality

Battery-operated, intelligent thumbturn or double cylinder, touchless activation with Diallock key.

- > Profile cylinder with reader on one side (thumbturn cylinder) or both sides (double cylinder) for access control
- > Acoustic feedback when presenting the key
- > Illuminated ring for indication of status:
Green = unlocking, red = locking, no LED = stand-by
- > Standard setting: Engagement of external thumbturn with authorised Diallock key and automatic disengagement after 10 seconds (variable time setting)
- > For service personnel: Indication of programming status and when battery change is required (acoustic alarm signal)
- > Infrared interface for programming
- > With real-time clock and audit trail of all processes

The following is required for ordering

- > Selection of standard/fire resistant interior or external doors
- > Determination of the required version DT 510 D, DT 510 D-DZ, DT 510 B and DT 510 H
- > Determination of cylinder lengths, dim. A and dim. B

Optional versions

Further optional versions can be ordered in addition to the depicted standard product range. Available special features:

- > Other profile cylinder lengths, dim. A and dim. B up to 87.5 mm (up to 175 mm total length)
- > Weatherproof version (WP)
- > Thumbturn characteristics/finish (soft-touch coating)
- > Different finishes available on request
- > Increasing the fire resistance category from T30 to T90
- > Drilling and pull protection in compliance with VdS 2156 BZ
- > Version for gearbox door locks with smooth operation
- > Shouldered cylinder, e.g. in combination with door backplates with cylinder cover (not available for DT 510 H)

Technical data

Degree of protection	IP65 weatherproof inside and outside of buildings
Ambient temperature (operation)	-20 °C to +70 °C
Relative humidity	0-95 % (not condensed)
Prohibited climates	Not suitable for use in corrosive environment (chlorine, ammoniac, lime water)
Fire resistance category	T30
Battery	Service life: Approx. 2 years with average use (approx. 40,000 locking processes) Approved battery type: Panasonic Industrial Lithium (CR-2 Lithium)
Profile cylinder lengths	27.5 mm to 62.5 mm
Number of possible Diallock keys	1000

Notes for operation and installation

- ▼ PC cylinder adapter and reader head are explicitly linked with an internal code. This means that changing the reader head only is not possible.

A mortice lock in compliance with DIN 18251 and the tool set are required for installation.

Combination with padlocks with PC aperture for outdoor use is only possible with weatherproof cylinder version.

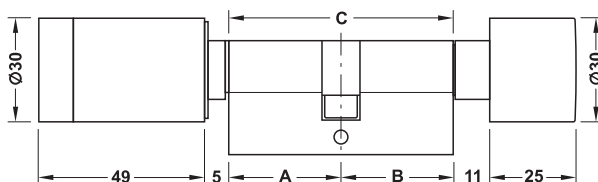
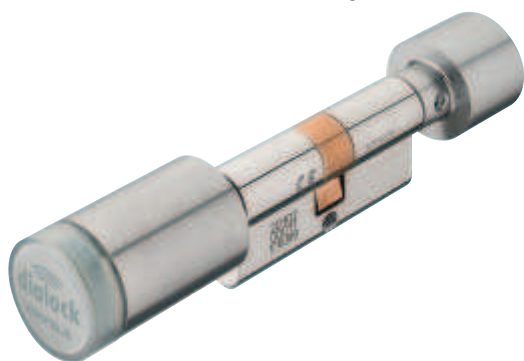
Battery change Only use Panasonic Industrial Lithium batteries type CR-2. We recommend changing the batteries before the winter months when using the electronic profile cylinder outdoors.

Avoid storage with inserted battery (increased discharge).

DT 510 D thumbturn cylinder	►DK 4.45
DT 510 D-DZ double cylinder	►DK 4.46
DT 510 B thumbturn cylinder, dummy on one side	►DK 4.47
DT 510 H single cylinder with thumbturn	►DK 4.48
DT 510 version options	►DK 4.49 C
Version in compliance with EN 179 / EN 1125	►DK 4.49

DK 2013, HDE, 04/13; Dimensional data not binding. We reserve the right to alter specifications without notice.

→ DT 510 D Thumbturn cylinder



Dim. A and dim. B

are available with max. length of 87.5 mm.
The total length dim. C is therefore max. 175 mm.

Special lengths that are not depicted here must be ordered under
Cat. No. 917.57.900. For more information please see optional versions.

Installation conditions dim. A

The PC profile must be flush with the door handle set (backplate or escutcheon)
or may only project by max. 3 mm.

- Version: With electronic reader head (dim. A) and thumbturn (dim. B)
- Material: PC housing: Brass, reader head and thumbturn: Stainless steel, reader unit: Plastic
- Finish: PC housing: Nickel plated, reader head and thumbturn: Matt

Supplied with

- 1 DT 510 D thumbturn cylinder
- 1 Forend screw
- 1 Battery, type CR 2, 3V lithium
- Short installation instructions



Dim. A mm	Dim. B mm	Dim. C mm	Cat. No.
27.5	27.5	55	917.57.100
	32.5	60	917.57.101
	37.5	65	917.57.102
	42.5	70	917.57.103
	47.5	75	917.57.104
	52.5	80	917.57.105
	57.5	85	917.57.106
	62.5	90	917.57.107
32.5	27.5	60	917.57.110
	32.5	65	917.57.111
	37.5	70	917.57.112
	42.5	75	917.57.113
	47.5	80	917.57.114
	52.5	85	917.57.115
	57.5	90	917.57.116
	62.5	95	917.57.117
37.5	27.5	65	917.57.120
	32.5	70	917.57.121
	37.5	75	917.57.122
	42.5	80	917.57.123
	47.5	85	917.57.124
	52.5	90	917.57.125
	57.5	95	917.57.126
	62.5	100	917.57.127
42.5	27.5	70	917.57.130
	32.5	75	917.57.131
	37.5	80	917.57.132
	42.5	85	917.57.133
	47.5	90	917.57.134
	52.5	95	917.57.135
	57.5	100	917.57.136
	62.5	105	917.57.137

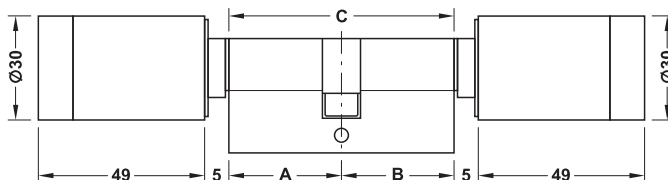
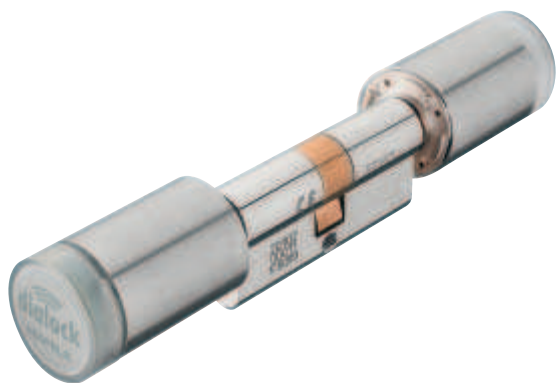
Dim. A mm	Dim. B mm	Dim. C mm	Cat. No.
47.5	27.5	75	917.57.140
	32.5	80	917.57.141
	37.5	85	917.57.142
	42.5	90	917.57.143
	47.5	95	917.57.144
	52.5	100	917.57.145
	57.5	105	917.57.146
	62.5	110	917.57.147
52.5	27.5	80	917.57.150
	32.5	85	917.57.151
	37.5	90	917.57.152
	42.5	95	917.57.153
	47.5	100	917.57.154
	52.5	105	917.57.155
	57.5	110	917.57.156
	62.5	115	917.57.157
57.5	27.5	85	917.57.160
	32.5	90	917.57.161
	37.5	95	917.57.162
	42.5	100	917.57.163
	47.5	105	917.57.164
	52.5	110	917.57.165
	57.5	115	917.57.166
	62.5	120	917.57.167
62.5	27.5	90	917.57.170
	32.5	95	917.57.171
	37.5	100	917.57.172
	42.5	105	917.57.173
	47.5	110	917.57.174
	52.5	115	917.57.175
	57.5	120	917.57.176
	62.5	125	917.57.177

Order reference

Please order supplementary products, e.g. mortise lock or lever handle aperture parts, separately.

DT 510 product overview	▶ DK 4.44
Optional versions	▶ DK 4.49 C
Version in compliance with EN 179 / EN 1125	▶ DK 4.49
Supplementary products	▶ DK 4.49 D

→ DT 510 D-DZ Double cylinder



Dim. A and dim. B

are available with max. length of 87.5 mm.

The total length dim. C is therefore max. 175 mm.

Special lengths that are not depicted here must be ordered under Cat. No. 917.57.900. For more information please see optional versions.

Installation conditions dim. A

The PC profile must be flush with the door handle set (backplate or escutcheon) or may only project by max. 3 mm.

- Version: With 2 electronic reader heads (dim. A = external side)
- Material: PC housing: Brass, reader head and thumbturn: Stainless steel, reader unit: Plastic
- Finish: PC housing: Nickel plated, reader head and thumbturn: Matt



Dim. A = external side

Supplied with

- 1 DT 510 D-DZ double cylinder
 - 1 Forend screw
 - 2 Batteries, type CR 2, 3V lithium
- Short installation instructions



Dim. A mm	Dim. B mm	Dim. C mm	Cat. No.
27.5	27.5	55	917.57.300
	32.5	60	917.57.301
	37.5	65	917.57.302
	42.5	70	917.57.303
	47.5	75	917.57.304
	52.5	80	917.57.305
	57.5	85	917.57.306
	62.5	90	917.57.307
32.5	27.5	60	917.57.310
	32.5	65	917.57.311
	37.5	70	917.57.312
	42.5	75	917.57.313
	47.5	80	917.57.314
	52.5	85	917.57.315
	57.5	90	917.57.316
	62.5	95	917.57.317
37.5	27.5	65	917.57.320
	32.5	70	917.57.321
	37.5	75	917.57.322
	42.5	80	917.57.323
	47.5	85	917.57.324
	52.5	90	917.57.325
	57.5	95	917.57.326
	62.5	100	917.57.327
42.5	27.5	70	917.57.330
	32.5	75	917.57.331
	37.5	80	917.57.332
	42.5	85	917.57.333
	47.5	90	917.57.334
	52.5	95	917.57.335
	57.5	100	917.57.336
	62.5	105	917.57.337

Dim. A mm	Dim. B mm	Dim. C mm	Cat. No.
47.5	27.5	75	917.57.340
	32.5	80	917.57.341
	37.5	85	917.57.342
	42.5	90	917.57.343
	47.5	95	917.57.344
	52.5	100	917.57.345
	57.5	105	917.57.346
	62.5	110	917.57.347
52.5	27.5	80	917.57.350
	32.5	85	917.57.351
	37.5	90	917.57.352
	42.5	95	917.57.353
	47.5	100	917.57.354
	52.5	105	917.57.355
	57.5	110	917.57.356
	62.5	115	917.57.357
57.5	27.5	85	917.57.360
	32.5	90	917.57.361
	37.5	95	917.57.362
	42.5	100	917.57.363
	47.5	105	917.57.364
	52.5	110	917.57.365
	57.5	115	917.57.366
	62.5	120	917.57.367
62.5	27.5	90	917.57.370
	32.5	95	917.57.371
	37.5	100	917.57.372
	42.5	105	917.57.373
	47.5	110	917.57.374
	52.5	115	917.57.375
	57.5	120	917.57.376
	62.5	125	917.57.377

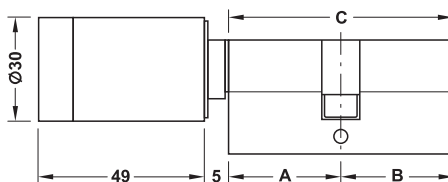
Order reference

Please order supplementary products, e.g. mortise lock or lever handle aperture parts, separately.

DT 510 product overview	► DK 4.44
Optional versions	► DK 4.49 C
Supplementary products	► DK 4.49 D

DK 2013, HDE, 04/13; Dimensional data not binding. We reserve the right to alter specifications without notice.

→ DT 510 B Thumbturn cylinder, with dummy on one side



Dim. A and dim. B

are available with max. length of 87.5 mm.
The total length dim. C is therefore max. 175 mm.
Special lengths that are not depicted here must be ordered under Cat. No. 917.57.900.
For more information please see optional versions.

Installation conditions dim. A

The PC profile must be flush with the door handle set (backplate or escutcheon) or may only project by max. 3 mm.

- Version: With electronic reader head (dim. A) and dummy (dim. B)
- Material: PC housing: Brass, reader head and thumbturn: Stainless steel, reader unit: Plastic
- Finish: PC housing: Nickel plated, reader head and thumbturn: Matt

Supplied with

- 1 DT 510 B thumbturn cylinder, with dummy on one side
- 1 Forend screw
- 1 Battery, type CR 2, 3V lithium
- Short installation instructions



Dim. A mm	Dim. B mm	Dim. C mm	Cat. No.
27.5	27.5	55	917.57.000
	32.5	60	917.57.001
	37.5	65	917.57.002
	42.5	70	917.57.003
	47.5	75	917.57.004
	52.5	80	917.57.005
	57.5	85	917.57.006
	62.5	90	917.57.007
32.5	27.5	60	917.57.010
	32.5	65	917.57.011
	37.5	70	917.57.012
	42.5	75	917.57.013
	47.5	80	917.57.014
	52.5	85	917.57.015
	57.5	90	917.57.016
37.5	27.5	65	917.57.020
	32.5	70	917.57.021
	37.5	75	917.57.022
	42.5	80	917.57.023
	47.5	85	917.57.024
	52.5	90	917.57.025
	57.5	95	917.57.026
	62.5	100	917.57.027
42.5	27.5	70	917.57.030
	32.5	75	917.57.031
	37.5	80	917.57.032
	42.5	85	917.57.033
	47.5	90	917.57.034
	52.5	95	917.57.035
	57.5	100	917.57.036
	62.5	105	917.57.037

Dim. A mm	Dim. B mm	Dim. C mm	Cat. No.
47.5	27.5	75	917.57.040
	32.5	80	917.57.041
	37.5	85	917.57.042
	42.5	90	917.57.043
	47.5	95	917.57.044
	52.5	100	917.57.045
	57.5	105	917.57.046
	62.5	110	917.57.047
52.5	27.5	80	917.57.050
	32.5	85	917.57.051
	37.5	90	917.57.052
	42.5	95	917.57.053
	47.5	100	917.57.054
	52.5	105	917.57.055
	57.5	110	917.57.056
	62.5	115	917.57.057
57.5	27.5	85	917.57.060
	32.5	90	917.57.061
	37.5	95	917.57.062
	42.5	100	917.57.063
	47.5	105	917.57.064
	52.5	110	917.57.065
	57.5	115	917.57.066
	62.5	120	917.57.067
62.5	27.5	90	917.57.070
	32.5	95	917.57.071
	37.5	100	917.57.072
	42.5	105	917.57.073
	47.5	110	917.57.074
	52.5	115	917.57.075
	57.5	120	917.57.076
	62.5	125	917.57.077

Order reference

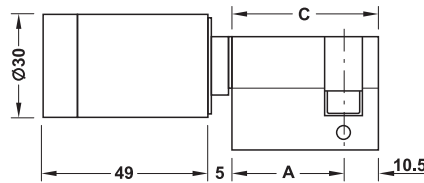
Please order supplementary products, e.g. mortise lock or lever handle aperture parts, separately.

DT 510 product overview	► DK 4.44
Optional versions	► DK 4.49 C
Version in compliance with EN 179 / EN 1125	► DK 4.49
Supplementary products	► DK 4.49 D

DK 2013, HDE, 01/13; Dimensional data not binding. We reserve the right to alter specifications without notice.

LEGIC® Integra Project

→ DT 510 H Single cylinder with thumbturn



Dim. A

is available with max. length of 87.5 mm.

The total length dim. C is therefore max. 97.5 mm.

Special lengths that are not depicted here must be ordered under Cat. No. 917.57.900.

For more information please see optional versions.

Installation conditions dim. A

The PC profile must be flush with the door handle set (backplate or escutcheon) or may only project by max. 3 mm.

- Version: With electronic reader head (dim. A)
- Material: PC housing: Brass, reader head and thumbturn: Stainless steel, reader unit: Plastic
- Finish: PC housing: Nickel plated, reader head and thumbturn: Matt

Supplied with

- 1 DT 510 H single cylinder with thumbturn
- 1 Forend screw
- 1 Battery, type CR 2, 3V lithium
- Short installation instructions



Dim. A mm	Dim. B mm	Dim. C mm	Cat. No.
27.5	10.5	38	917.57.200
32.5	10.5	43	917.57.201
37.5	10.5	48	917.57.202
42.5	10.5	53	917.57.203
47.5	10.5	58	917.57.204
52.5	10.5	63	917.57.205
57.5	10.5	68	917.57.206
62.5	10.5	73	917.57.207

Order reference

Please order supplementary products, e.g. mortise lock or lever handle aperture parts, separately.

DT 510 product overview	► DK 4.44
Optional versions	► DK 4.49 C
Supplementary products	► DK 4.49 D

DT 510 D-P, DT 510 B-P Electronic thumbturn or double cylinder



DT 510 D-P thumbturn cylinder



DT 510 B-P thumbturn cylinder, dummy on other side

Electronic thumbturn cylinder with PC shape for inserting in mortice locks that comply with DIN 18251 and with appropriate approval in accordance with EN 179 or EN 1125.

For door thickness from 40 to 110 mm.
Profile cylinder with defined locking lug position.

Functionality

Battery-operated, intelligent thumbturn or double cylinder, touchless activation with Dialock key.

- Profile cylinder with reader on one side for access control
- Acoustic feedback when presenting the key
- Illuminated ring for indication of status: Green = unlocking, red = locking, no LED = stand-by
- Standard setting: Engagement of external thumbturn with authorised Dialock key and automatic deactivation after 10 seconds (variable time setting)
- For service personnel: Indication of programming status and when battery change is required (acoustic alarm signal)
- Infrared interface for programming
- With real-time clock and audit trail of all processes

The following is required for ordering

- Selection for escape routes and panic areas in compliance with EN 179 or EN 1125 up to T30
- Determination of required version, DT 510 D-P or DT 510 B-P
- Determination of cylinder lengths, dim. A and dim. B

Optional versions

Further optional versions can be ordered in addition to the depicted standard product range. Available special features:

- Other profile cylinder lengths, dim. A and dim. B up to 87.5 mm (up to 175 mm total length)
- Thumbturn characteristics/finish (soft-touch coating)
- Different finishes available on request
- Increasing the fire resistance category from T30 to T90
- Drilling and pull protection in compliance with VdS 2156 BZ
- Shouldered cylinder, e.g. in combination with door backplates with cylinder cover

Technical Data

Degree of protection	Must not be exposed to the weather
Ambient temperature (operation)	-20 °C to +70 °C
Relative humidity	0–95 % (not condensed)
Prohibited climates	Not suitable for use in corrosive environment (chlorine, ammoniac, lime water)
Fire resistance category	T30 (T90 optional)
Service life of battery	Approx. 2 years with average use (approx. 40,000 locking processes)
Profile cylinder lengths	27.5 mm to 62.5 mm
Number of possible Dialock keys	1000
Audit trail entries	500

Notes for operation and installation

⚠ **Planning must be carried out by Dialock specialist**

- ⚠ PC cylinder adapter and reader head are explicitly linked with an internal code. This means that changing the reader head only is not possible.

A mortice lock in compliance with DIN 18251 and with appropriate approval in accordance with EN 179 or EN 1125 and the tool set are required for installation.

Battery change

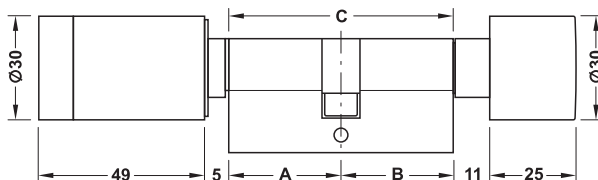
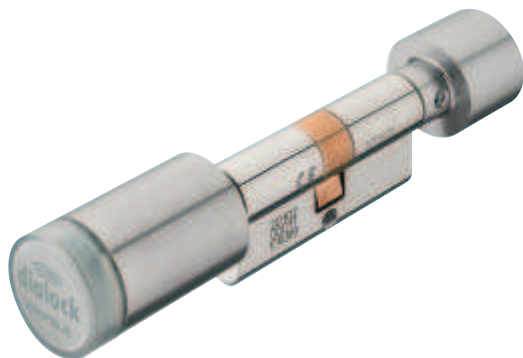
Only use Panasonic Industrial lithium batteries type CR-2.
Avoid storage with inserted battery (increased discharge).

DT 510 D-P thumbturn cylinder	▶ DK 4.49 A
DT 510 B-P thumbturn cylinder with dummy on one side	▶ DK 4.49 B
DT 510 optional versions	▶ DK 4.49 C
Standard/FR version	▶ DK 4.44

DK 2013, HDE, 04/13; Dimensional data not binding. We reserve the right to alter specifications without notice.

LEGIC® Integra Project

→ DT 510 D–P Thumbturn cylinder



Dim. A and dim. B

are available with max. length of 87.5 mm.
The total length dim. C is therefore max. 175 mm.

Special lengths that are not depicted here must be ordered under
Cat. No. 917.57.900. For more information please see optional versions.

Installation conditions dim. A

The PC profile must be flush with the door handle set (backplate or escutcheon)
or may only project by max. 3 mm.

- Version: With electronic reader head (dim. A) and thumbturn (dim. B)
- Material: PC housing: Brass, reader head and thumbturn: Stainless steel, reader unit: Plastic
- Finish: PC housing: Nickel plated, reader head and thumbturn: Matt

Supplied with

- 1 DT 510 D–P thumbturn cylinder
- 1 Forend screw
- 1 Battery, type CR 2, 3V lithium
- Short installation instructions



Dim. A mm	Dim. B mm	Dim. C mm	Cat. No.
27.5	32.5	60	917.57.601
	37.5	65	917.57.602
	42.5	70	917.57.603
	47.5	75	917.57.604
	52.5	80	917.57.605
	57.5	85	917.57.606
	62.5	90	917.57.607
32.5	32.5	65	917.57.611
	37.5	70	917.57.612
	42.5	75	917.57.613
	47.5	80	917.57.614
	52.5	85	917.57.615
	57.5	90	917.57.616
	62.5	95	917.57.617
37.5	32.5	70	917.57.621
	37.5	75	917.57.622
	42.5	80	917.57.623
	47.5	85	917.57.624
	52.5	90	917.57.625
	57.5	95	917.57.626
	62.5	100	917.57.627
42.5	32.5	75	917.57.631
	37.5	80	917.57.632
	42.5	85	917.57.633
	47.5	90	917.57.634
	52.5	95	917.57.635
	57.5	100	917.57.636
	62.5	105	917.57.637

Dim. A mm	Dim. B mm	Dim. C mm	Cat. No.
47.5	32.5	80	917.57.641
	37.5	85	917.57.642
	42.5	90	917.57.643
	47.5	95	917.57.644
	52.5	100	917.57.645
	57.5	105	917.57.646
	62.5	110	917.57.647
52.5	32.5	85	917.57.651
	37.5	90	917.57.652
	42.5	95	917.57.653
	47.5	100	917.57.654
	52.5	105	917.57.655
	57.5	110	917.57.656
	62.5	115	917.57.657
57.5	32.5	90	917.57.661
	37.5	95	917.57.662
	42.5	100	917.57.663
	47.5	105	917.57.664
	52.5	110	917.57.665
	57.5	115	917.57.666
	62.5	120	917.57.667
62.5	32.5	95	917.57.671
	37.5	100	917.57.672
	42.5	105	917.57.673
	47.5	110	917.57.674
	52.5	115	917.57.675
	57.5	120	917.57.676
	62.5	125	917.57.677

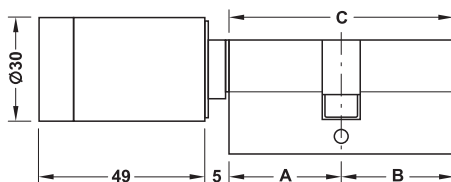
Order reference

Please order supplementary products, e.g. mortise lock or lever handle aperture parts, separately.

DT 510 product overview	► DK 4.49
Optional versions	► DK 4.49 C
Standard version	► DK 4.44
Supplementary products	► DK 4.49 D

DK 2013, HDE, 04/13; Dimensional data not binding. We reserve the right to alter specifications without notice.

→ DT 510 B–P Thumbturn cylinder, with dummy on one side



Dim. A and dim. B

are available with max. length of 87.5 mm.

The total length dim. C is therefore max. 175 mm.

Special lengths that are not depicted here must be ordered under Cat. No. 917.57.900.

For more information please see optional versions.

Installation conditions dim. A

The PC profile must be flush with the door handle set (backplate or escutcheon) or may only project by max. 3 mm.

- Version: With electronic reader head (dim. A) and dummy (dim. B)
- Material: PC housing: Brass, reader head and thumbturn: Stainless steel, reader unit: Plastic
- Finish: PC housing: Nickel plated, reader head and thumbturn: Matt

Supplied with

- 1 DT 510 B–P thumbturn cylinder, with dummy on one side
- 1 Forend screw
- 1 Battery, type CR 2, 3V lithium
- Short installation instructions



Dim. A mm	Dim. B mm	Dim. C mm	Cat. No.
27.5	32.5	60	917.57.501
	37.5	65	917.57.502
	42.5	70	917.57.503
	47.5	75	917.57.504
	52.5	80	917.57.505
	57.5	85	917.57.506
	62.5	90	917.57.507
32.5	32.5	65	917.57.511
	37.5	70	917.57.512
	42.5	75	917.57.513
	47.5	80	917.57.514
	52.5	85	917.57.515
	57.5	90	917.57.516
37.5	32.5	70	917.57.521
	37.5	75	917.57.522
	42.5	80	917.57.523
	47.5	85	917.57.524
	52.5	90	917.57.525
	57.5	95	917.57.526
	62.5	100	917.57.527
42.5	32.5	75	917.57.531
	37.5	80	917.57.532
	42.5	85	917.57.533
	47.5	90	917.57.534
	52.5	95	917.57.535
	57.5	100	917.57.536
	62.5	105	917.57.537

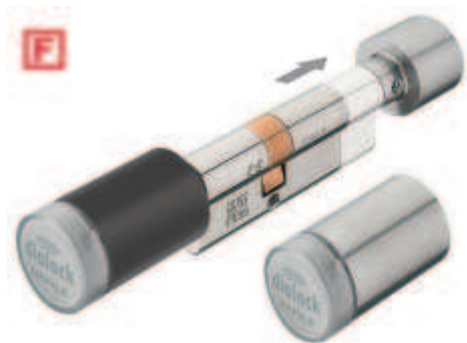
Dim. A mm	Dim. B mm	Dim. C mm	Cat. No.
47.5	32.5	80	917.57.541
	37.5	85	917.57.542
	42.5	90	917.57.543
	47.5	95	917.57.544
	52.5	100	917.57.545
	57.5	105	917.57.546
	62.5	110	917.57.547
52.5	32.5	85	917.57.551
	37.5	90	917.57.552
	42.5	95	917.57.553
	47.5	100	917.57.554
	52.5	105	917.57.555
	57.5	110	917.57.556
	62.5	115	917.57.557
57.5	32.5	90	917.57.561
	37.5	95	917.57.562
	42.5	100	917.57.563
	47.5	105	917.57.564
	52.5	110	917.57.565
	57.5	115	917.57.566
	62.5	120	917.57.567
62.5	32.5	95	917.57.571
	37.5	100	917.57.572
	42.5	105	917.57.573
	47.5	110	917.57.574
	52.5	115	917.57.575
	57.5	120	917.57.576
	62.5	125	917.57.577

Order reference

Please order supplementary products, e.g. mortise lock or lever handle aperture parts, separately.

DT 510 product overview	► DK 4.49
Optional versions	► DK 4.49 C
Standard version	► DK 4.44
Supplementary products	► DK 4.49 D

DT 510 Optional versions



A data sheet with mandatory (required fields) and optional (optional fields) specifications must be provided when ordering.
 A fillable PDF form can be found in our online system "Easy link".

Area of application

A range of version options with customised DT 510 door terminal (from an order quantity of 1 piece) are available in addition to the standard versions.

A Dialock specialist is mandatory for planning these approx. 5000 other versions.

Version*	Description	Notes	DT profile cylinder					
			510 D	510 D-DZ	510 B	510 H	510 D-P	510 B-P
FR T90 (917.93.075)	Fire resistance up to 90 minutes	Dim. A: From 32.5 mm Dim. B: From 27.5 mm	✓	✓	✓	✓	✓	✓
VdS (917.93.060)	Version with drilling and pull protection in compliance with VdS 2156 BZ	–	✓	✓	✓	✓	✓	✓
VL (917.93.064)	Extension on one side dim. A / dim. B: 65–87 mm	Total length max. 175 mm (one side max. 87.5 mm)	✓	✓	✓	✓	✓	✓
ST (917.93.062)	Soft-touch coating of reader head	Thumbturn colour: Black	✓	✓	✓	✓	✓	✓
SB (917.93.076)	Shouldered cylinder	–	✓	✓	✓		✓	✓
D-GS (917.93.073)	For gearbox door locks with extremely smooth operation	Dim. A: From 27.5 mm Dim. B: From 32.5 mm	✓	✓	✓			
B-GS (917.93.074)	For gearbox door locks with extremely smooth operation	Dim. A: From 27.5 mm Dim. B: From 32.5 mm	✓	✓	✓			

* do not use specified Cat. Nos. for ordering, these cause incorrect items in your order.

Version	Description	Cylinder specifications	Suggested ordering unit
Required fields			
	Required number of DT 510		1
	Room designation/No.		Room 1.15
	Full model designation		DT 510 D
	Dim. A: from 67.5 mm extension VL		27.5 mm
	Dim. B: from 67.5 mm extension VL		37.5 mm
	Transponder technology		Legic® Integra
Optional fields			
FR T90	Fire resistance up to 90 minutes		Yes
VdS	With drilling and pull protection		No
VL	Extension	Dim. A (67.5-87.5 mm)	No
		Dim. B (67.5-87.5 mm)	No
ST	Soft-touch coating of reader head		No
SB	Offset cylinder		No
D-GS	Gearbox door locks with smooth operation		No
B-GS		No	

	Cat. No.
Optional versions of DT 510	917.57.900

DK 2013, HDE, 04/13; Dimensional data not binding. We reserve the right to alter specifications without notice.

LEGIC® Integra
Project

Tool set



- Area of application: For removing the reader cover from the reader head, required for changing the battery

	Cat. No.
Tool set	917.93.065

Battery



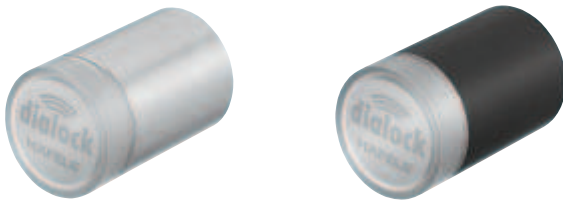
- Area of application: For supplying power to the DT 510 door terminal

Supplied with

1 Battery, type CR2, 3V lithium

	Cat. No.
Battery	910.54.961

Reader cover



- Material: Stainless steel
- Installation: Tool set required for changing the reader cover

Finish	Cat. No.
Satin	917.93.066
With black soft-touch coating	917.93.067

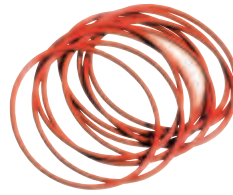
Locking ring



- Area of application: Connecting element between profile cylinder and reader head
- Version: With black sealing ring
- Installation: For plug-fitting and screw fixing

	Cat. No.
Locking ring	917.93.070

Sealing ring



- Area of application: For sealing the reader head
- Installation: For inserting in locking ring

Version	Cat. No.
Sealing ring red: For weatherproof version (WP)	917.93.072

Replacement thumbturn



- Area of application: Replacement thumbturn for DT 510 D and DT 510 D-P thumbturn cylinder
- Material: Stainless steel
- Finish: Satin
- Installation: Fixing with grub screw SW 2.5

	Cat. No.
Replacement thumbturn	917.93.069

Cover plate

For covering the edge of the drillings for TSE door terminals



TSE door terminal

- Area of application: For covering the installation holes (with possible colour deviations and pressure marks) when replacing TSE door terminals with DT 400 or DT 510 door terminals
- Material: Stainless steel
- Finish: Satin
- Dim. (L x W): 310 x 72 mm

Note

Also suitable for the use on fire resistant and smoke control doors. 2 cover plates are required for 1 door.

	Cat. No.
Cover plate	917.90.102

DK 2013, HDE, 01/13; Dimensional data not binding. We reserve the right to alter specifications without notice.

LEGIC® Integra Project

Electronic Access Control Systems